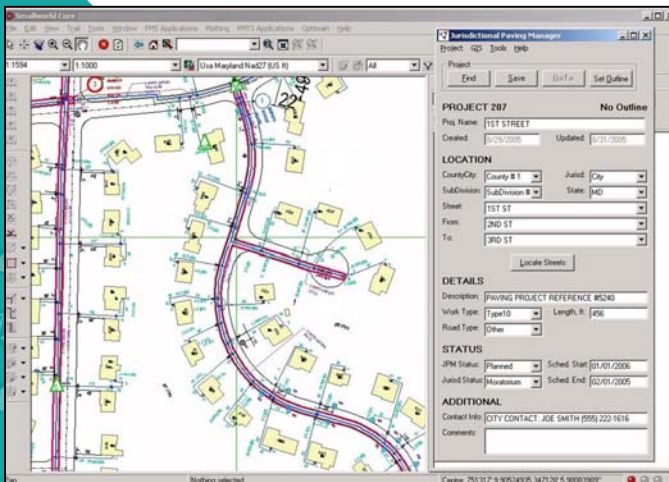


Jurisdictional Paving Manager

Municipal & state paving projects have a significant impact on circuit re-engineering economics & priorities. Aligning candidate projects with planned paving or resurfacing activities, or with other 3rd-party construction projects, can generate significant cost savings. On the other hand, digging up a street that has been recently paved to repair a faulty conductor can often incur financial penalties and impact customer satisfaction. This is why Opvantek created the Jurisdictional Paving Manager application. JPM is a perfect companion to OpCircuit DS, or it can be deployed stand-alone.

Benefits

- ▼ Reduce paving expenses by up to 30% of total replacement/repair cost.
- ▼ Improve coordination with municipal and state jurisdictions and neighboring utilities.
- ▼ Improve internal communication about pending paving work or other 3rd party construction activities.
- ▼ Reduce permitting costs through coordinated planning.
- ▼ Reduce or avoid moratorium penalties due to premature disturbance of freshly paved streets.
- ▼ Improve customer satisfaction by reducing utility-driven construction activities.



Features

JPM delivers real business benefits via key features like:

- ▼ **Visibility to Other GIS Users.** Model 3rd party paving and construction projects in the enterprise GIS, providing the opportunity to identify and coordinate with other maintenance activities in the same area.
- ▼ **Flexible Configuration.** Configure pick-lists for project status, work type, road type, and jurisdiction to match your business process and the data you receive from the jurisdictions.
- ▼ **Street Locator.** Type partial names for primary or intersecting streets, pick the matching street from a drop down list. Click a button to find matching streets on the GIS map.
- ▼ **Easy Data Entry.** Find the street segments, create an automatically-named project with a single click, and set the project's outline based on street centerline data.
- ▼ **Integrated with the OpCircuit Suite.** Share street data across the OpCircuit Suite, and refresh it as part of the OpCircuit Incremental Refresh process. Configure Paving Projects as source records for OpCircuit DS, automatically impacting economic scores and identifying candidate replacement projects that overlap with planned street work.



28 South State Street
Newtown, PA 18940
215.968.7790
888.244.8674 Toll Free
sales@opvantek.com
www.opvantek.com