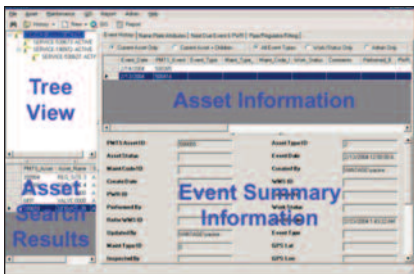




## Optimain ACM

### Asset and Compliance Management



*Manages all DOT Part 192  
Compliance Activities*

#### Do You Really Know Your Assets?

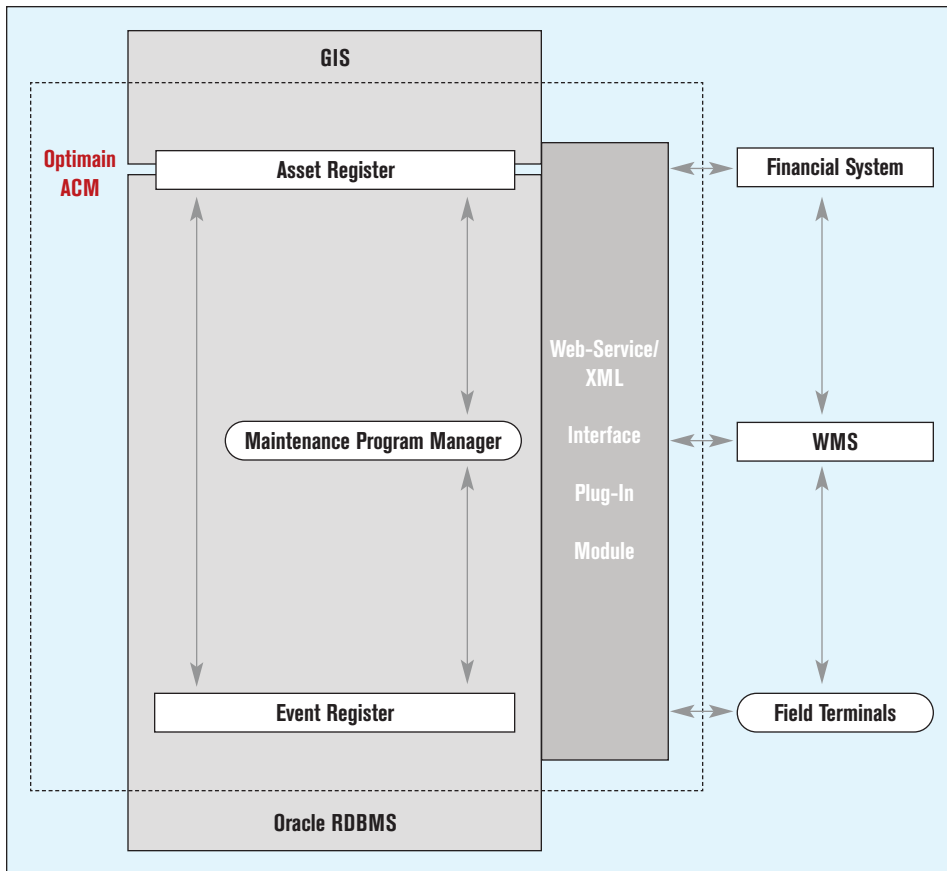
*Challenges facing gas operators today include:*

- *Constant pressure to reduce operating costs*
- *Optimizing capital and O&M program expenditures*
- *Maximizing asset life and value*
- *Assuring regulatory compliance and asset integrity*
- *Bridging diverse information silos*

*While today's distribution utilities can "outsource" many aspects of their business, their assets are what clearly define their business models. Yet most maintain the knowledge base of their assets in diverse systems, and face major challenges integrating and optimizing them. Opvantek has a solution that not only improves operations, but will also evolve with changing regulatory requirements, including DIMP.*

#### Your Solution: Optimain ACM

*Now you can effectively manage every physical network asset with a single, integrated solution. Optimain ACM is a proven and field-tested asset and compliance management solution for distribution utilities. Optimain ACM includes a comprehensive asset and event registry stored in a standard relational database, with a full graphical interface depicting asset families and relationships via tree-views. It models all physical network assets and events in a single, open solution, and is fully integrated with all of the leading GIS platforms.*



**Asset Relationship Manager** - visualize asset relationships via a hierarchical 'TreeView'. The asset relationship model is stored in Optimain ACM's relational database so it can work in mixed or limited GIS environments. Create and maintain relationships via a drag and drop user interface, or drive them from a GIS interface.

**Maintenance Program Manager** - Provides the user with an interface to manage compliance programs (e.g. lifecycle leak management, leak surveys, corrosion surveys, valve inspections, regulator station maintenance, etc.). Programs are created by users. Assets subscribe to programs based on user-defined selection or event criteria. Pending Work Orders are created based on time or event-based actions and lead times.

**Maintenance Program Tracking** - various reports to track compliance and program completion.

**Audit Trail Support** - Provides an audit trail of all asset/event transactions by user/asset type

**User Management** - Add/modify user privileges within the Optimain ACM database

## Features

- Complete registry for all current and historical assets and asset events
- Configurable editors for assets and events
- Configurable business rules for data validation
- Maintenance Program Manager to create, manage and evaluate Maintenance Programs that can be driven by DOT regulations and company policy, using time, event and asset condition driven logic
- Program initiated work requests that can be pushed to an external work management system or managed completely within Optimain ACM
- Comprehensive asset and event audit trail
- Asset relationship visualization (TreeView) and modeling in a relational database environment
- Seamless navigation between geospatial and relational asset displays
- Integration with asset data in geospatial, financial, and legacy databases
- Create and process ad hoc work requests
- System-wide maintenance program progress reporting by user specified criteria

## Compliance

Optimain ACM handles 100% of an LDC's network maintenance and compliance program work, including all CFR 49 Part 192 DOT requirements, such as:

- Transmission and Distribution Line Patrols
- Cathodic Protection Surveys and Record-keeping
- Regulator Station Maintenance
- Distribution Leak Surveys
- Critical Valve Maintenance and Inspections

## Product Architecture

**Integrated Asset Register** - a common enterprise registry for creation and maintenance of all asset types, including detailed 'NamePlate' attribution for all assets.

**Integrated Event Register** - a common registry for all types of planned and completed asset events (e.g. work requests related to the asset lifecycle, including asset creation, maintenance, inspection, and retirement) or operational history (e.g. changes in asset status, storage location, etc.). The Event Register also supports detailed 'Job-Card' and field supplied information for each event type, and summary level job cost information.

## Flexibility and Integration

The Optimain ACM database is configured on an Oracle RDBMS platform. The desktop application runs on Windows XP workstations (or higher) or a Citrix Terminal Service. Optimain ACM can be implemented as a stand-alone application or can be fully integrated with any module in the Optimain™ Product Suite. Either way, you can expect superior performance.

## Optional Interfaces

### Optimain GIS

Derive asset relationships from your enterprise GIS. Users can navigate seamlessly between the Optimain ACM desktop application and the GIS map. Optimain ACM interfaces with all leading GIS platforms including GE Small-world, ESRI, Intergraph, and Autodesk.

### Optimain WMS

Send work requests to an external work management system for scheduling and completion. Receive work updates or other asset events into Optimain ACM via a standard web service with full data validation support.